

First, turn off the computer and unplug the power cord.

Next, open the computer. Some computers have a button that you press to open the box. Some have screws on the rear of the case which must be removed. I just need to remove the screws on the back of the case.

Slide the casing back. Now you have access to the inside of your computer.

While working inside your case, you need to be mindful of static electricity. To avoid building up a static charge (that could potentially short out a component) just be mindful to touch a grounded metal surface from time to time to prevent a static charge from building. Touching your computer's power supply unit, for example, should do the trick.

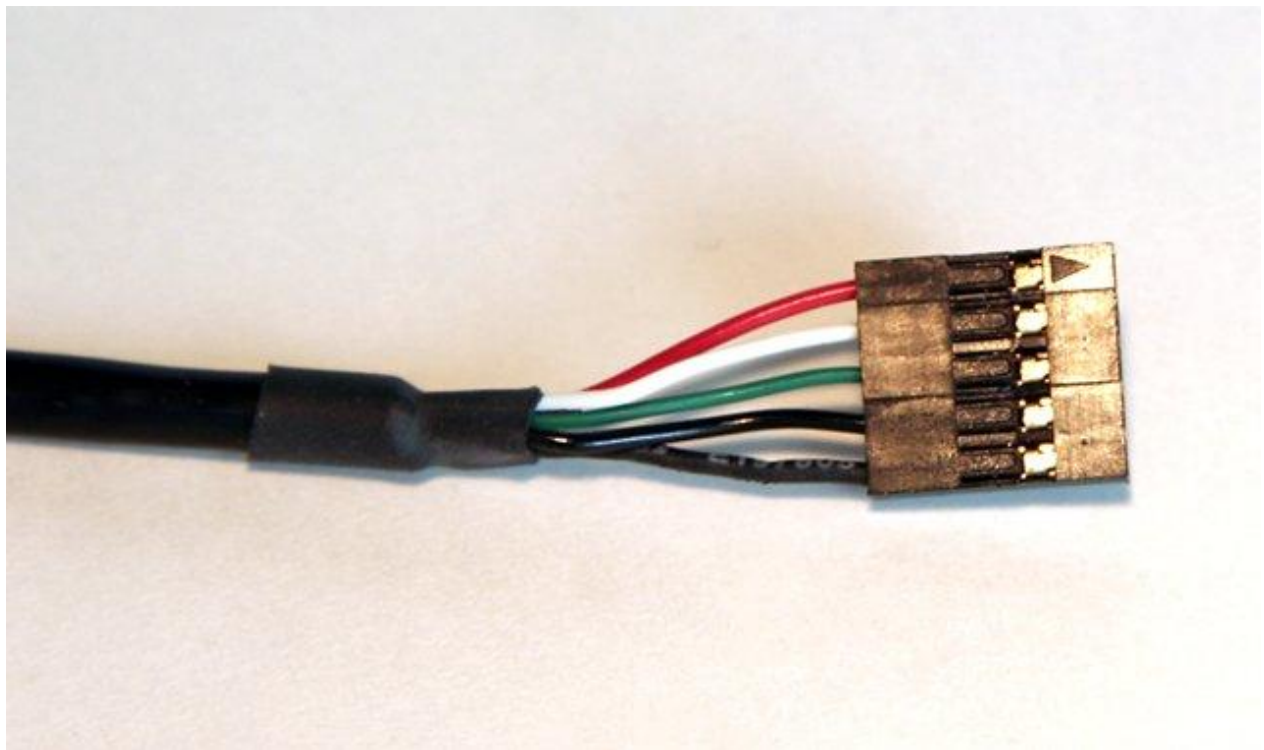
1. Identifying pin-out of USB header on the motherboard.

12" internal high-speed USB 2.0 cable is included into SkyWalker-2 kit.

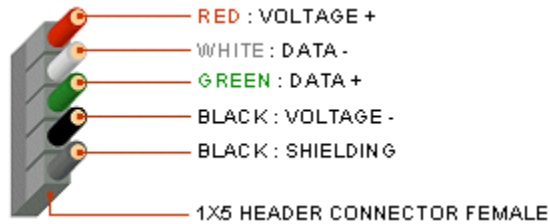
It has a standard pin-out. Please check the cable and locate pin #1.

Pin 1 is a pin with red wire.

In addition, connector housing has "arrow" mark at position of pin 1 (as on the picture below):



This is the pin-out of the cable which is identical to pin-out of USB connector on SkyWalker-2 board.



Red: + 5V / Voltage + / VCC
 White: D - / Data - / USB -
 Green: D + / Data + / USB +
 Black: GND / Voltage - / Ground
 Black: S-GND / Over Current / Shielding

Check your motherboard manual.

If USB header of your motherboard has identical pin-out, you may use supplied cable without any modifications. Just make sure you use proper orientation of the connector.

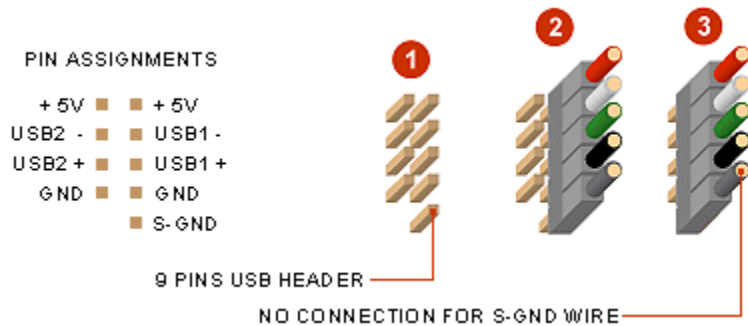


Diagram 1: On most motherboards, the USB header/pin-out consists of 9 pins arranged in 2 rows, which allows for 2 USB connections (i.e. USB1 and USB2). Normally, the pins for USB1 and USB2 are in separate rows.

Diagram 2: For SkyWalker-2 cable connection use 5-pins row. This would insure that shielding of this cable is properly grounded. Preferably, use one USB connector per USB header on the motherboard.

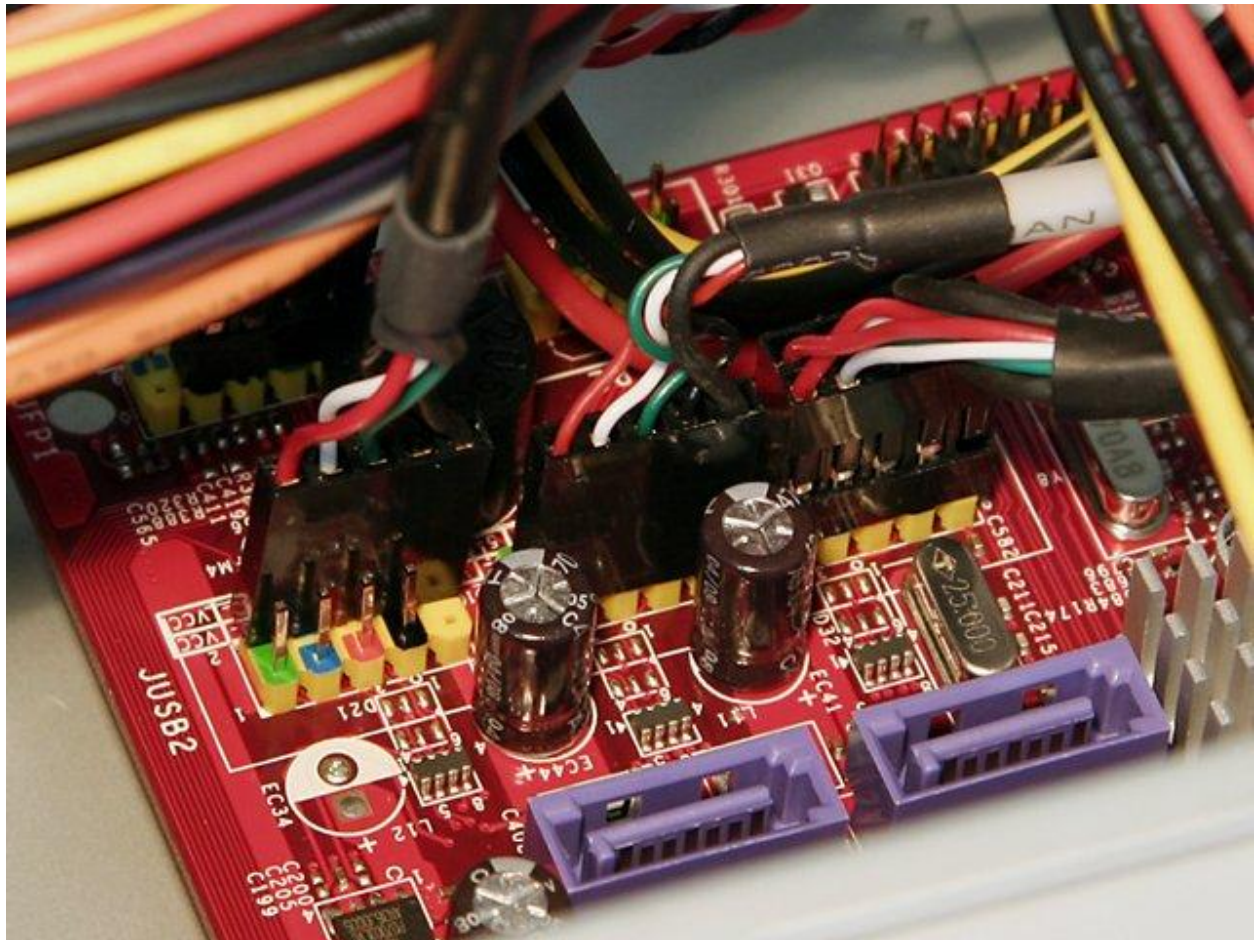
Diagram 3: If all 5-pin rows are already occupied by another USB devices, identify slow USB 1.1 device (for instance, infrared sensor for remote control) and plug it into 4-pin row can. You can use vacant 5-pin row for SkyWalker-2 USB cable.

Alternatively, your mother board can have 10-pin header (like on diagram below).

For such header, simply plug the connector onto any row of the pins, and always make sure that pin assignments and wire assignments are matched correctly.



The following picture is an example of USB header usage in side CaptiveWorks Receiver CW-4000HD. SkyWalker-2 USB cable is plugged into 5-pin row of JUSB2 header:



2. Locate spare PCI slot

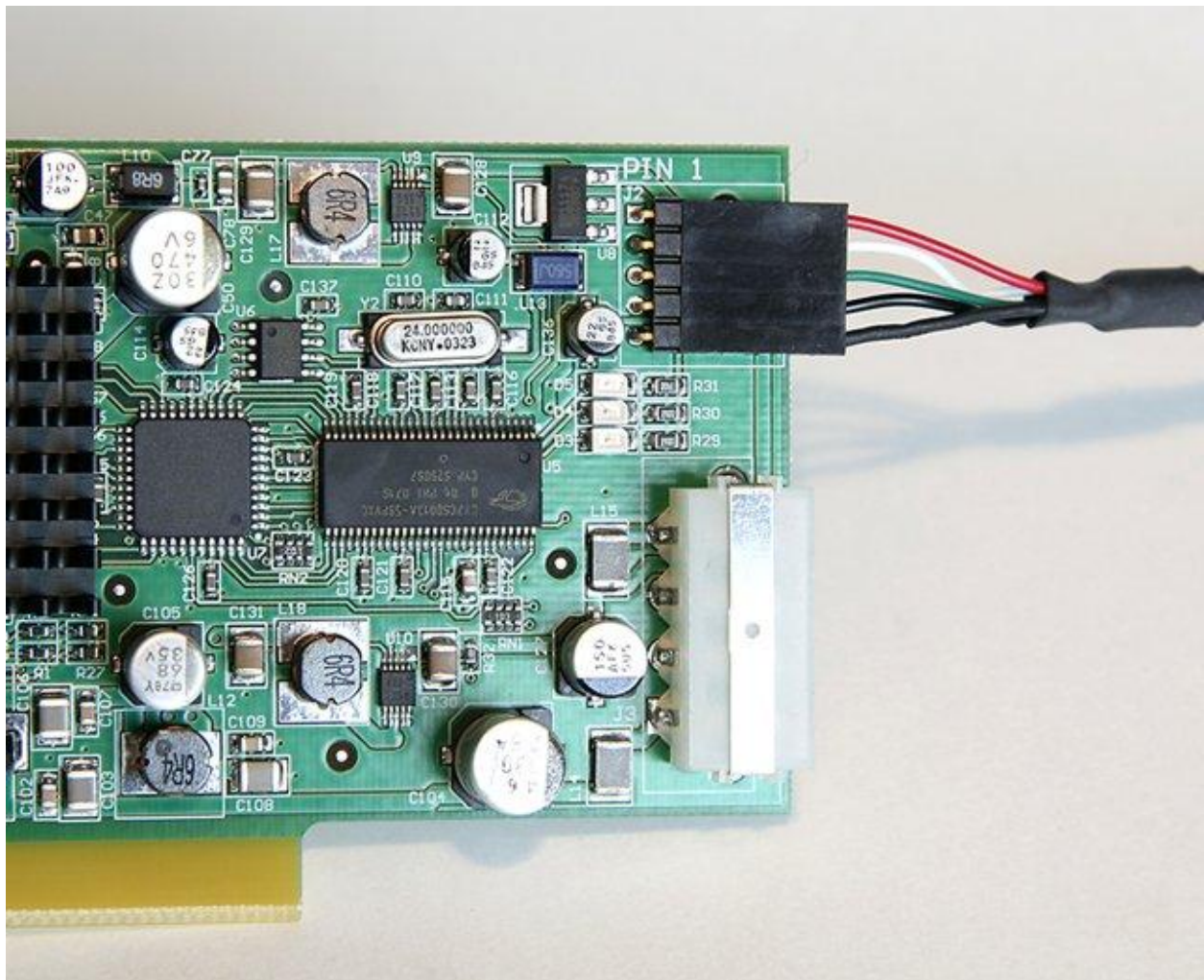
Desktop PCs have several PCI slots for you to use. Sometimes these can be hidden below wires, so you may need to gently push those aside.

Depending on how your computer was put together, there might already be cards in a few of the PCI slots.

Find an open one which gives you plenty of space above and below to insert your SkyWalker-2. You may need to rearrange slot occupation. Check the motherboard manual, there may be some order preference in terms of IRQ assignments.

SkyWalker-1 does not need any electrical contact with PCI slot. Thus, it can occupy any slot. Just make sure that it is far from major heat sources inside your computer. Preferably, choose the slot where SkyWalker-2 can be cooled by internal airflow (from internal fans).

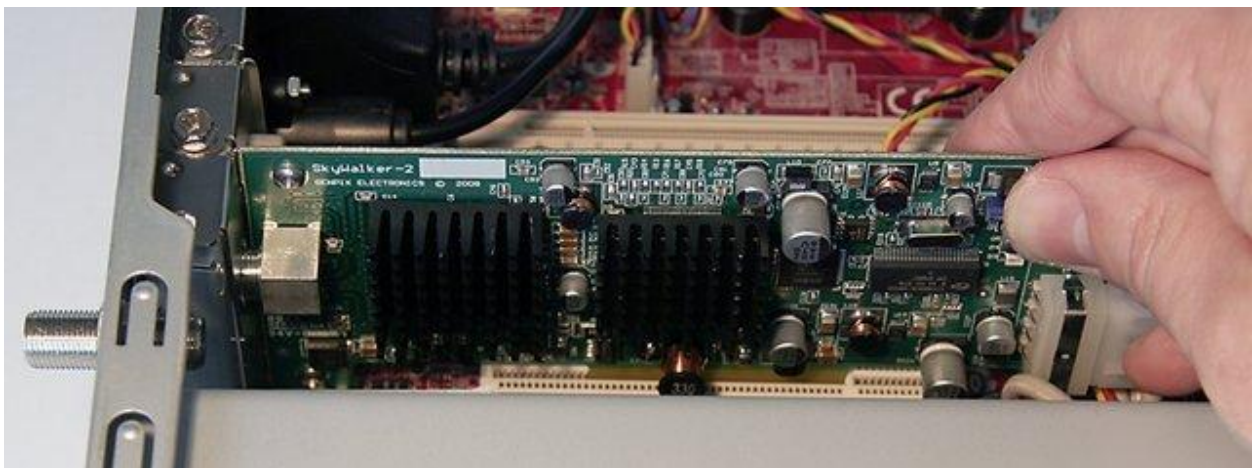
When you are finished with selection of proper PCI slot, connect cables to SkyWalker-2. Watch out the "PIN 1" label on SkyWalker-2. Plug the USB cable so that pin 1 of connector (red wire) is against "PIN 1" label on the board.



Next, plug spare Molex power connector from your PC power supply into power connector of SkyWalker-2. Watch out for proper orientation of the cable and make sure the connector is securely plugged (all the way in):

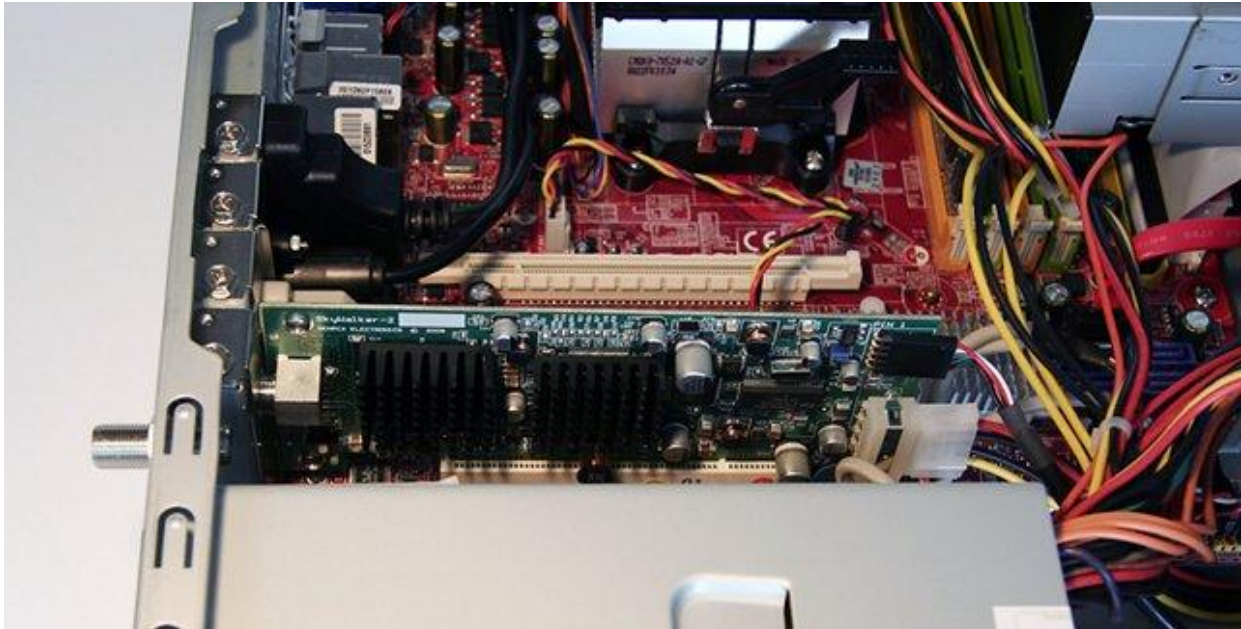


Next, align the PCI card directly over the slot in the motherboard. Once this is in place, gently press down on both the front and back of the card until it is snug:

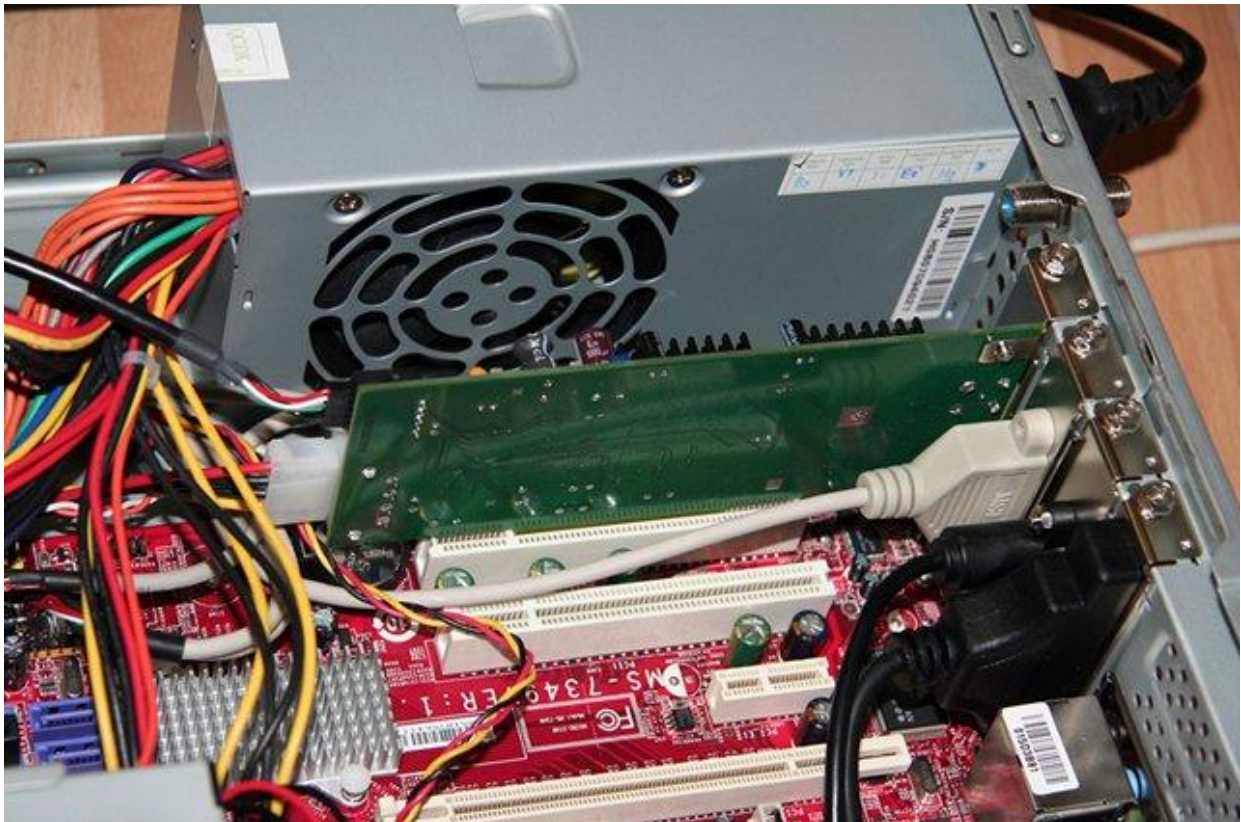


Once the card is seated in the slot, screw or fasten down the card to the case at the PC card slot.

These are several views of the properly installed SkyWalker-2. CaptiveWorks CW-4000HD receiver was used as example.



Please notice that SkyWalker-2 is placed against the cooling fan of power supply. This insures very efficient cooling.





Close up your computer and plug in all of your cables back.

AC power cable should be plugged the last.